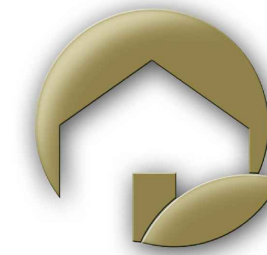
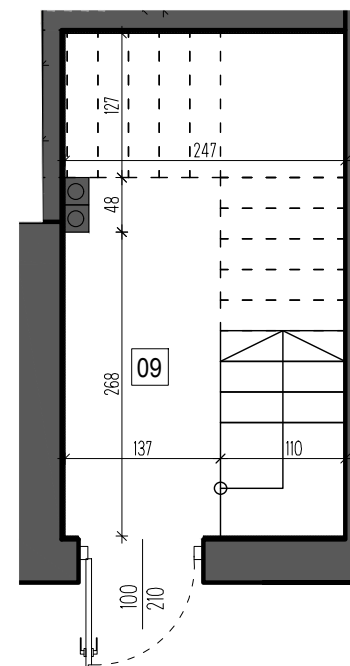
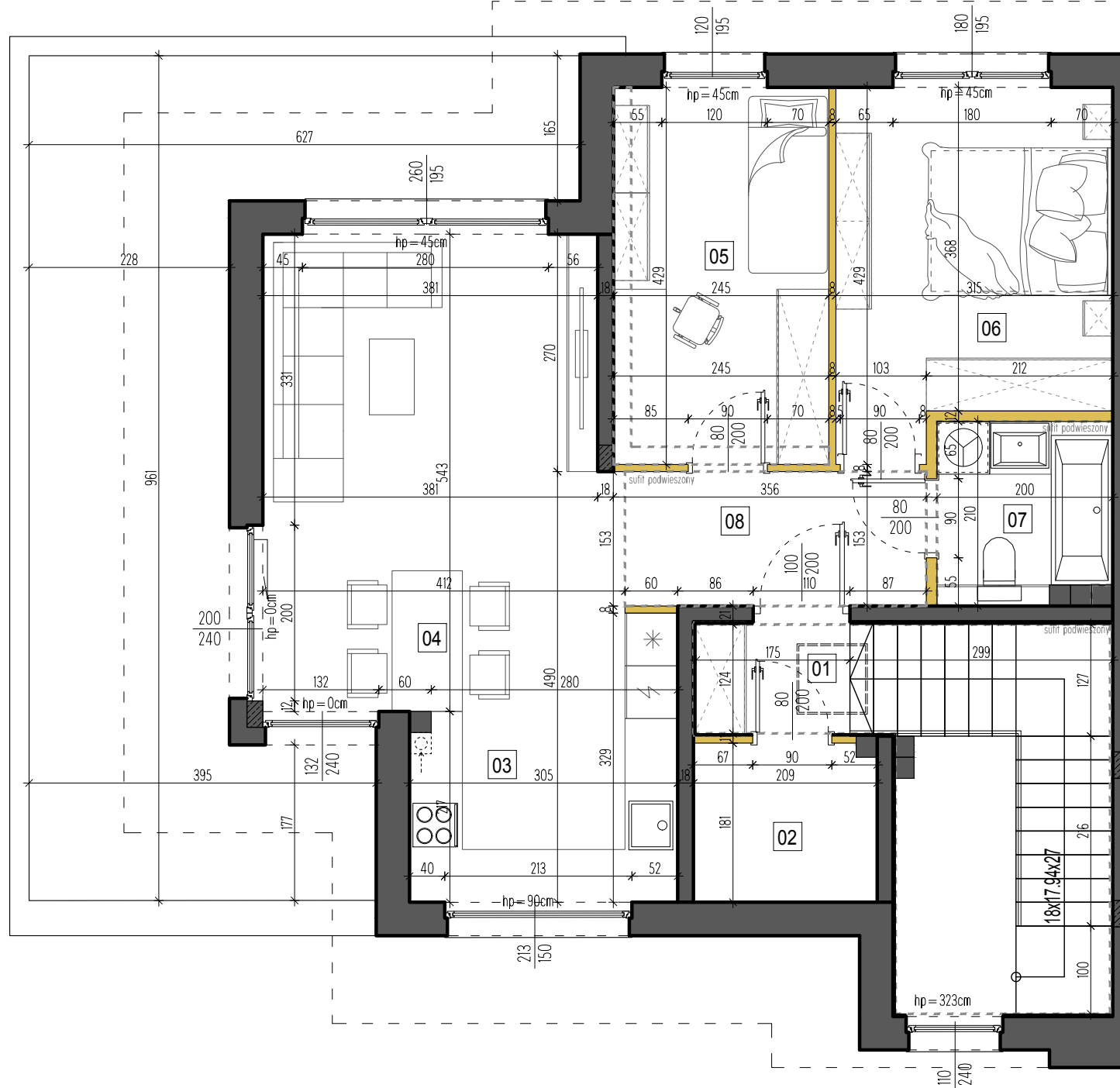
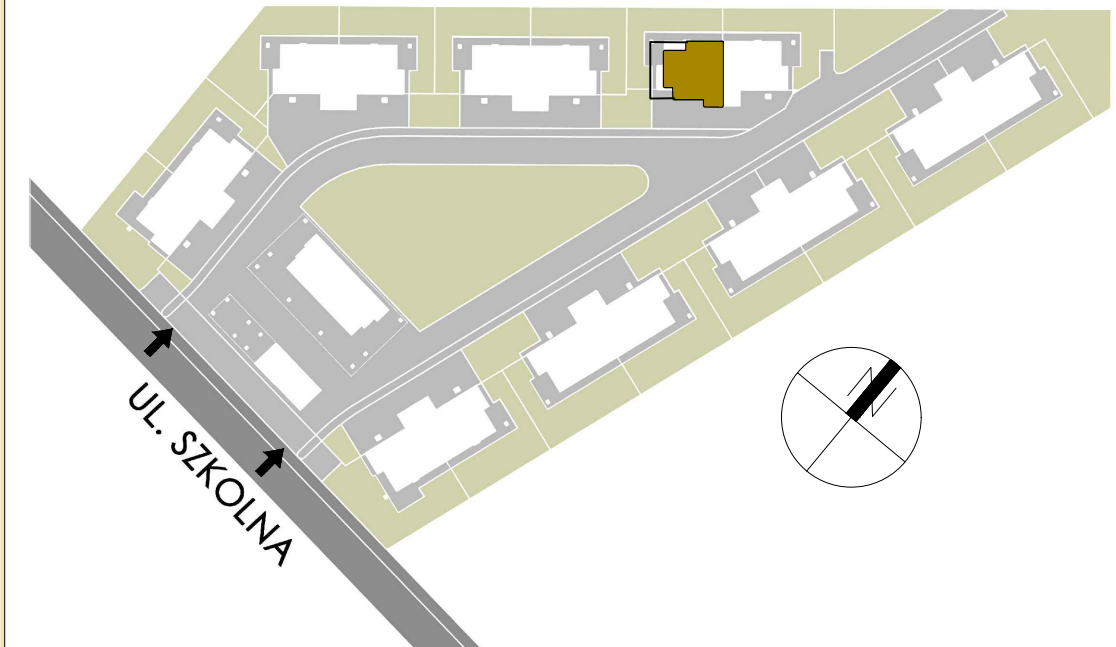


# APARTAMENT 7B

## PIĘTRO



APARTAMENTY  
EKO-ŻELKÓW



POWIERZCHNIA UŻYTKOWA:  
**80,27 m<sup>2</sup>**

+ taras na piętrze 31,46 m<sup>2</sup>

ZESTAWIENIE POMIESZCZEŃ:

| PIĘTRO |                     |                      |
|--------|---------------------|----------------------|
| 01     | klatka schodowa     | 6.20 m <sup>2</sup>  |
| 02     | pomieszczenie tech. | 3.75 m <sup>2</sup>  |
| 03     | kuchnia             | 7.23 m <sup>2</sup>  |
| 04     | salon z jadalnią    | 21.53 m <sup>2</sup> |
| 05     | sypialnia           | 10.51 m <sup>2</sup> |
| 06     | sypialnia           | 12.21 m <sup>2</sup> |
| 07     | łazienka            | 4.03 m <sup>2</sup>  |
| 08     | komunikacja         | 5.24 m <sup>2</sup>  |

| PARTER |                 |                     |
|--------|-----------------|---------------------|
| 09     | klatka schodowa | 9.57 m <sup>2</sup> |